


# Coming Soon

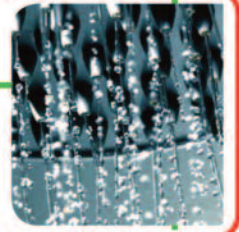
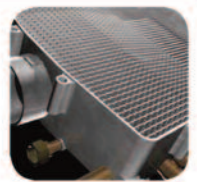
Looking for a compact, high efficiency wall mounted gas boiler that also provides domestic hot water?

Look no further...  Challenger

from  TriangleTube



# Available in Fall 2010



## Technical Specifications

Pending agency verifications

Model		CC 85	CC 105	CC 125
<b>Input Modulation</b>	BTU	23,000 - 84,000	29,000 - 106,000	33,000 - 124,000
<b>AFUE</b>		95%	95%	95%
<b>Performance</b>				
DHW Flow Rate at 108°F	GPM	2.6	3.3	4.0
DHW Flow Rate at 140°F	GPM	1.6	2.0	2.4
<b>General Specifications</b>				
Height	Inch	23 1/4	25 1/2	28
Width	Inch	17 3/4	17 3/4	17 3/4
Depth	Inch	9 1/2	9 1/2	9 1/2
Hydronic Connections	Inch	1	1	1
DHW Connections	Inch	1/2	1/2	1/2
Weight	Lbs	66	73	80

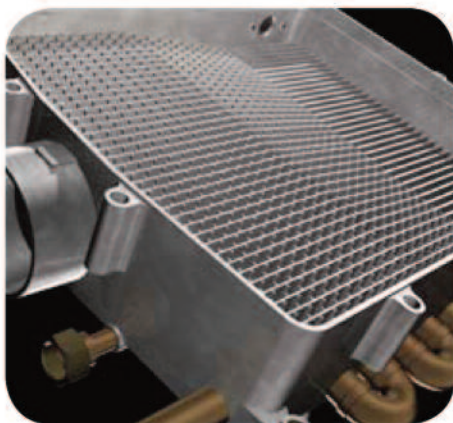
- > Low Nox Premix Burner
- > Outdoor Temperature Reset
- > Glycol Compatible

The heat exchanger forms the heart of every high efficiency boiler.

The Challenger features a unique two-in-one heat exchanger which ensures the reduction of heat losses and an optimum heat transfer.

Boiler water and domestic water run through two separate copper coils embedded in an aluminum block.

Manufactured in the Netherlands exclusively for Triangle Tube, the Challenger has a 20 year track record in condensing boiler technology and is backed by Triangle Tube's unparalleled reputation for performance and factory support.



Unique Heat Exchanger Design

